

# Financial Management

**25th PETs Conference  
26<sup>th</sup> – 29th April, 2017  
Trinidad and Tobago**

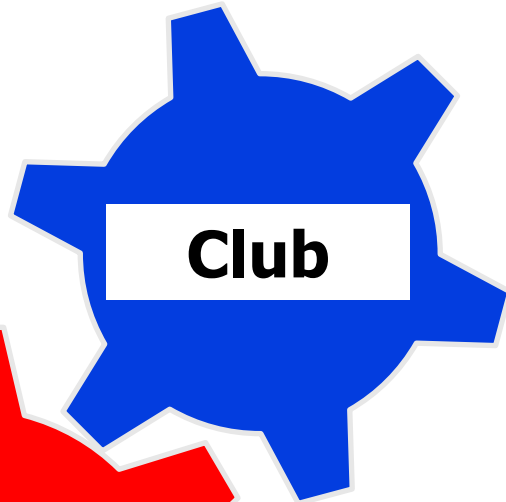
Rabindra H. Outar  
Assistant Governor, North  
Clubs, Trinidad

RC of Central Port of Spain  
rho4tax@gmail.com

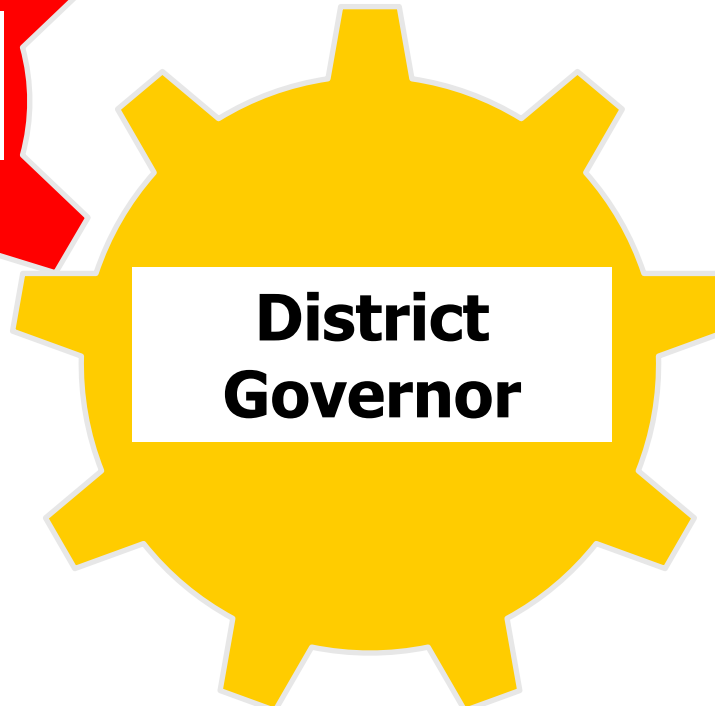
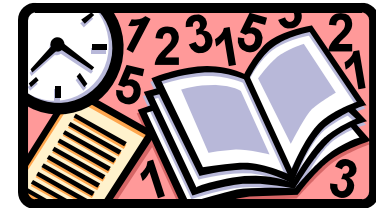
Rotary 



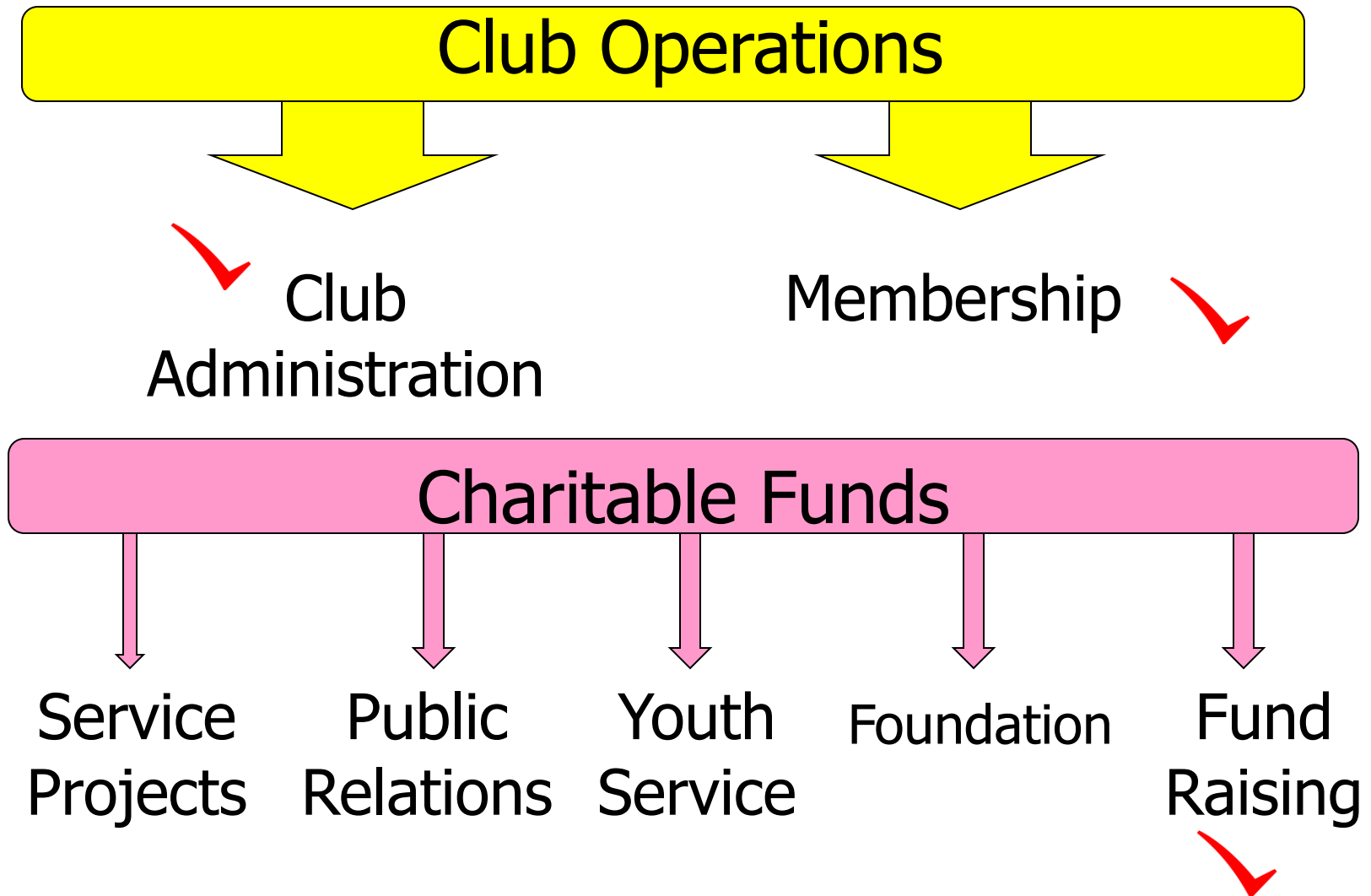
# 3 Significant Budgets for a District



**A LOOK**  
*at the*  
**BUDGET**



# 7 Useful Committee Budgets



## 2 Key Income and Expenditure Statements

OPERATIONS	+	CHARITABLE	TOTAL TTD	CLUB OPERATIONS	CHARITABLE FUNDS
<b>INCOME</b>					
1) Club Dues, Fines Raffles			15,000	15,000	
2) Administration Fee Transfer From Charitable to Operations (15%)			0		7,500
3) Internal Fund Raisers (Auction Sales)			5,500	5,500	
4) Ticket Sales, Sponsorship, Donations			50,000		42,500
<b>TOTAL INCOME</b>			<b>70,500</b>	<b>20,500</b>	<b>50,000</b>
<b>LESS EXPENDITURE</b>					
1) Audit Fees, R.I. and District Dues, Conference Exp., Flags, Pennants			22,000	22,000	
2) Disaster Relief, RYLA, Rotaract Conf. R.I. Annual and Polio Funds			40,000		40,000
3) Salaries <b>Seek Tax Advice</b>			0		
<b>TOTAL EXPENDITURE</b>			<b>62,000</b>	<b>22,000</b>	<b>40,000</b>
<b>NET SURPLUS / (DEFICIT)</b>			<b>8,500</b>	<b>(1,500)</b>	<b>10,000</b>

# Calculation of Club Dues – 20 Members

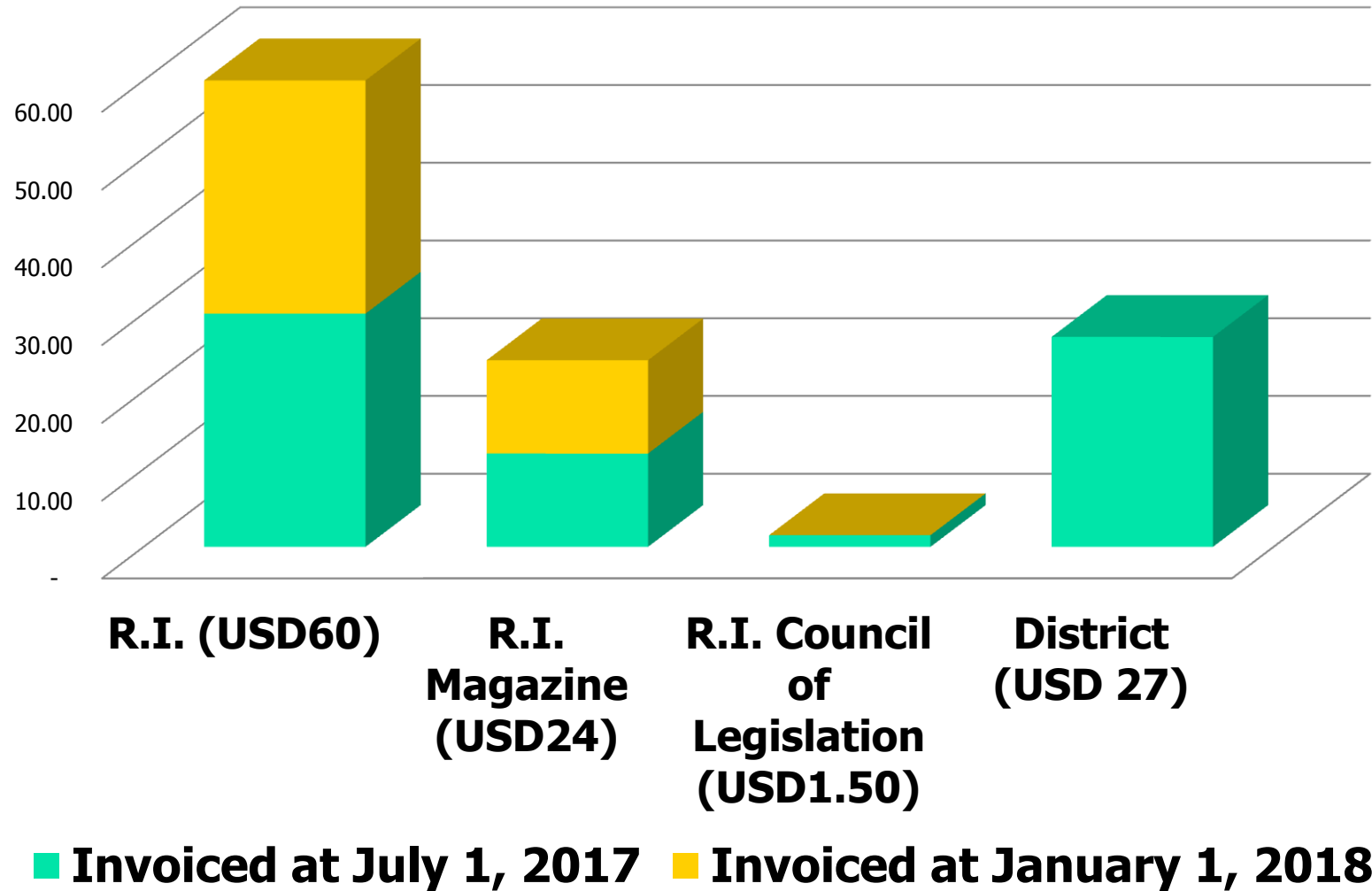
<b>INCOME (Club Operations)</b>		<b>25 MEM.</b>	<b>40 MEM.</b>
1) Fines, Raffles (4 meetings)	4,800	9,700	15,500
2) Internal Fund Raisers	3,800	4,300	5,300
<b>TOTAL INCOME</b>	<b>8,600</b>	<b>14,000</b>	<b>20,800</b>
<b>LESS EXPENDITURE</b>			
1) Audit Fees	6,000	6,000	6,000
2) District Conf. Expenses	23,360	23,360	23,360
3) District Dues	3,672	4,590	7,344
4) Flags, Pennants, Pins	4,000	4,000	4,000
5) Rotary International Dues	11,628	14,535	23,256
6) Tokens, Gifts	2,000	2,000	2,000
<b>TOTAL EXPENDITURE</b>	<b>50,660</b>	<b>54,485</b>	<b>65,960</b>
<b>NET DEFICIT</b>	<b>(42,060)</b>	<b>(40,485)</b>	<b>(45,160)</b>
<b>DUES PER MEMBER (TTD)</b>	<b>2,103</b>	<b>1,619</b>	<b>1,129</b>
	<b>USD 309</b>	<b>USD 238</b>	<b>USD 166</b>

# R.I. Rules Effective January 2011

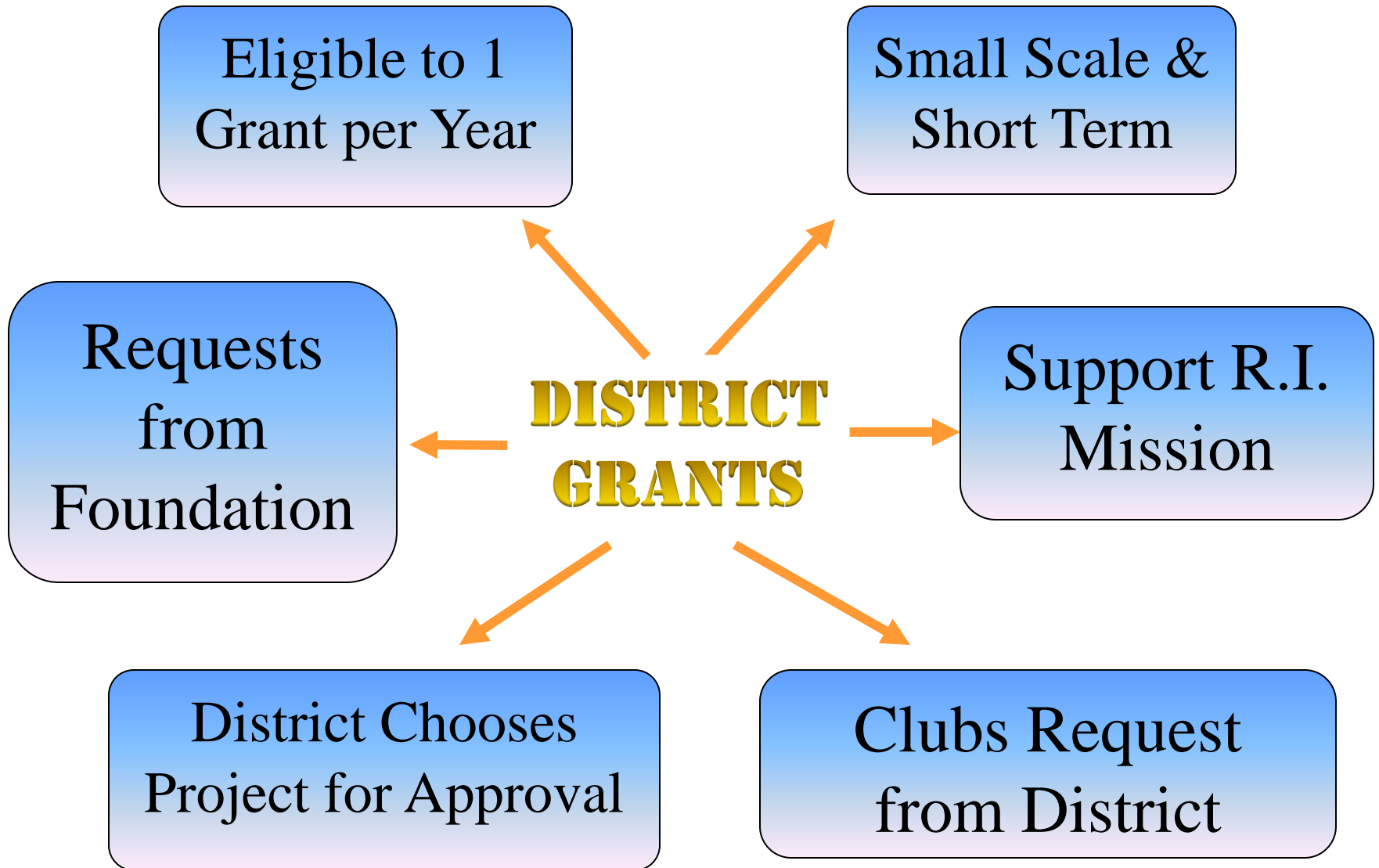
- Charter Members Increased to 25
- Club must pay R.I. dues for at least 10 Members
- A sponsor club must have at least 20 Members
- **How do we assist smaller clubs?**



# Rotary International and District Dues



# Grants Management





# Global Grants

Long Range  
Projects

Audited  
Financial  
Statements

Global Grants

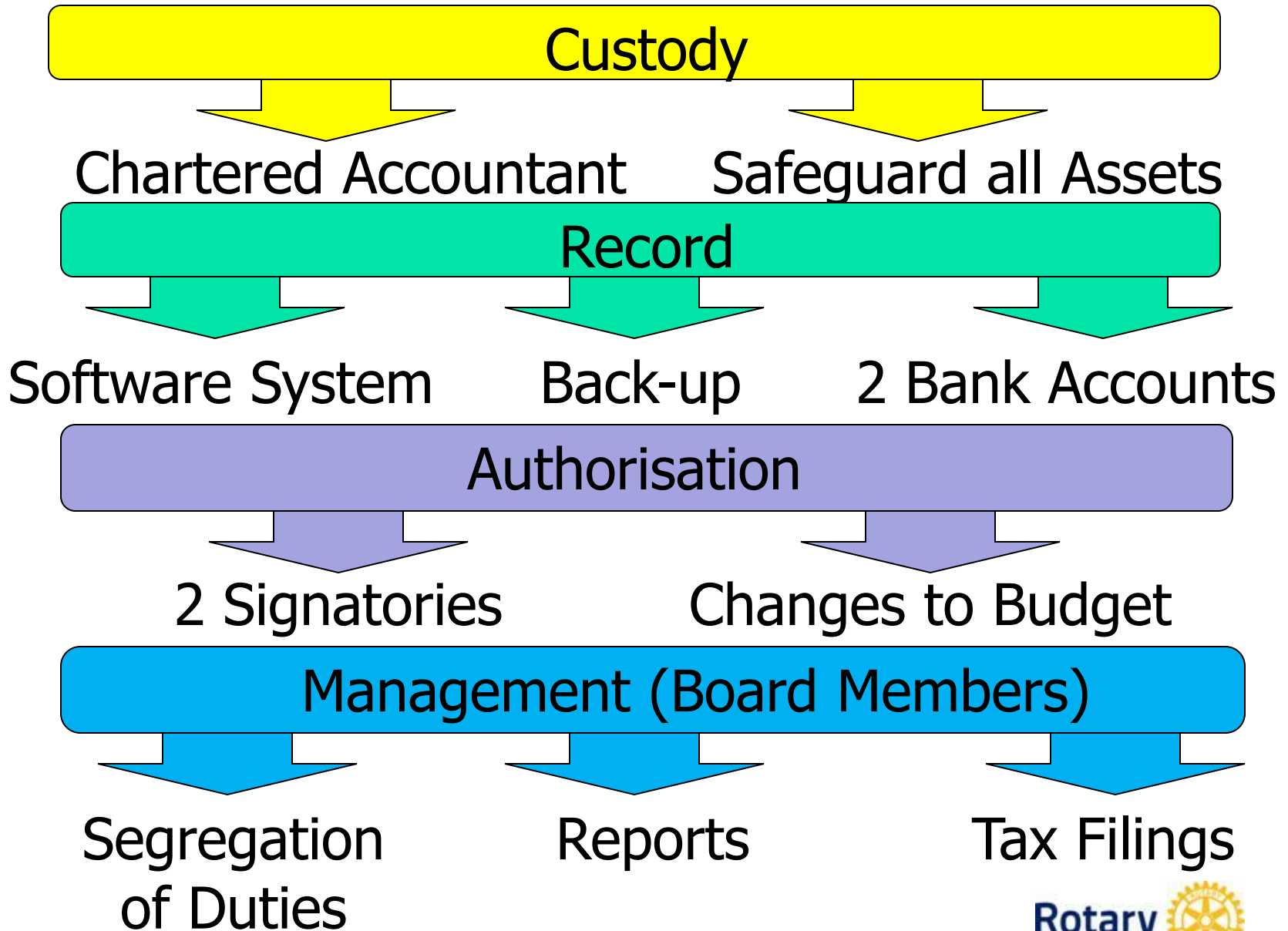


R.I. and  
District  
Dues Paid

Project Aligned  
to Area of  
Focus

Attend Grants  
Seminar and  
Sign Club MOU

# Develop An Accounting System



# Have A Great Year!

